

ORBIT

ALUMINUM



CYLINDERS

ORBV 50/6

Closed Height 11"

Stroke 6"

Body O.D: 5.5"

Base 7.5" x 7.5" x 0.5"

Weight: 30 Lbs

Oil Capacity: 68 In³.

Also available with 10" Stroke



ORBV 30/6

Closed Height 11"

Stroke 6"

Body O.D: 4.5"

Base 6" x 6" x 0.5"

Weight: 20 Lbs

Oil Capacity: 39 In³.

Also available with 10" Stroke

All models feature a:

Shut off valve which enables the separation of the pump from the jack while the load is still supported

ORV 100/6

Closed Height 10.5"

Stroke 6"

Body O. D. 8.0"

Weight 53 Lbs

Oil Capacity 126 In³.

Also available with 10" Stroke



All Orbit Cylinders are constructed and tested in compliance with ASME B30.1 standards

Made in Canada



"ORBIT" - The Lightweight with a **Solid Punch**

ORBIT

ALUMINUM



CYLINDERS

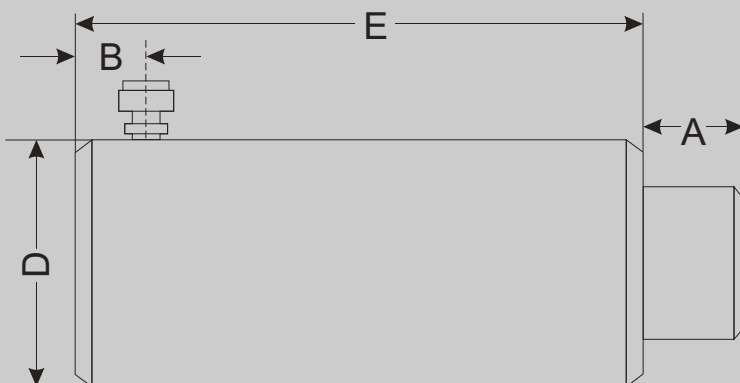
Ordering Information

Operating pressure for all "ORBIT" cylinders up to 700 BAR / 10,000 PSI
Single Acting Spring Return - 30, 50 and 100 Tons

ORBIT Manufacturing Inc.
#104 - 3070 Norland Ave.,
Burnaby, B.C.
Canada V5B 3A6

Phone: (604)-293-0063
Fax: (604)-293-0064
Email: orbit@telus.net
Web: www.orbithydraulics.com

Order Model Number	CYLINDER CAPACITY	A	E	CYLINDER EFFECTIVE AREA	OIL CAPACITY	B	WEIGHT	D
		STROKE	RETRACTED HEIGHT			BASE TO INLET PORT		
	tons	mm / in.	mm / in.	cm ² / sq.in.	cm ³ / cu.in.	mm / in.	kg / lb.	mm / in.
ORBV 30/6	30	152/6	279.4/11	41.9/6.5	639/39	38/1.5	9.2/20	114/4.5
ORBV 30/10	30	254/10	381.0/15	41.9/6.5	1065/65	38/1.5	12.2/27	114/4.5
ORBV 50/6	50	152/6	279.4/11	71.2/11	1085/68	38/1.5	13.6/30	139/5.5
ORBV 50/10	50	254/10	381.0/15	71.2/11	1809/110.4	38/1.5	17.0/39	139/5.5
ORV 100/6	100	152/6	266.7/10.5	133/20.7	2027/126	38/1.5	23.8/53	203/8.0
ORV 100/10	100	254/10	368.3/14.5	133/20.7	3379/206	38/1.5	31.7/70	203/8.0



ORBIT Manufacturing Inc. is committed to continuous product enhancement and development and reserves the right to make product design changes without prior notice.

Warranty

All ORBIT cylinders are guaranteed against defects in materials and workmanship. Warranty does not cover normal wear and tear, overloading or improper use. For warranty claims, please contact your nearest ORBIT dealer.